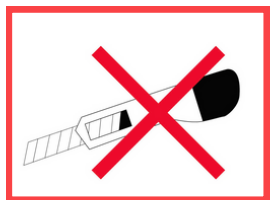
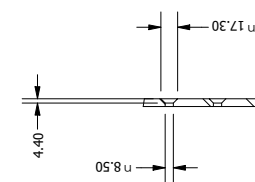
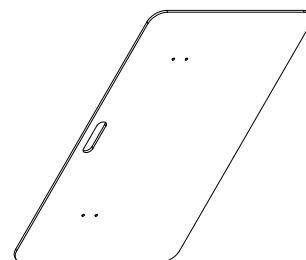


MountStand - Floorplate

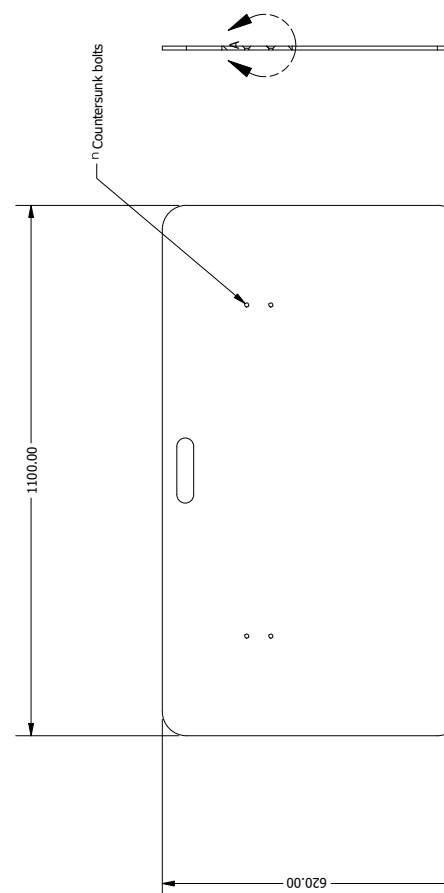
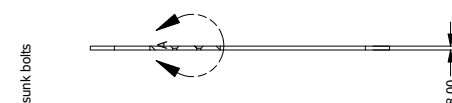
Art. DID100.300.000



Technical Drawing



DETAIL A
SCALE 1 / 5



Curved

SPECIAL WARNING

INSTALLATION AND SERVICE MUST BE PERFORMED BY A QUALIFIED INSTALLER. READ AND SAVE THESE INSTRUCTIONS FOR FUTURE REFERENCE.

UNPACKING YOUR PRODUCT

Remove all packing materials from the product carefully. Handle this product with care. Be careful when cutting the packaging to avoid damaging the product.

IMPORTANT NOTES TO THE INSTALLER

Keep this manual for future reference.

- Always handle this product with two people (> 25kg)
- This product should only be installed and grounded properly by a qualified installer or service technician.

TOOLS

Inbus



FIXING MATERIALS

M8x25 (4x)



Additional products



MountStand - Wall

Art. DID100.100.000

www.dekkerindustrialdesign.nl/product/mountstand-wall/



MountStand - Floorplate

Art. DID100.200.000

www.dekkerindustrialdesign.nl/product/mountstand-double-screen/



MountStand - Double

Art. DID100.300.000

www.dekkerindustrialdesign.nl/product/mountstand-double-screen/



MountStand - Mobile

Art. DID100.600.000

www.dekkerindustrialdesign.nl/product/mountstand-mobile/



MountStand - Backplate

Art. DID100.700.000

www.dekkerindustrialdesign.nl/product/mountstand-backplates/



Plug and Play Delivery

Art. DID110.000.000

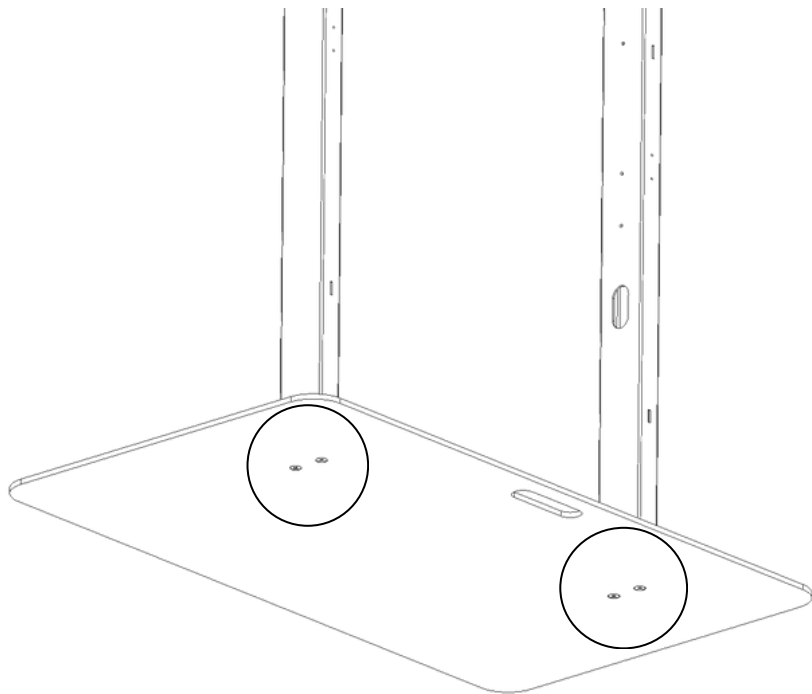
www.dekkerindustrialdesign.nl/product/mountstand-plug-and-play/

45 min



First install the Floorplate to the MountStand

1. Before you assemble the MountStand. First mount the two vertical beams of the MountStand on the Floorplate with the 4x M8x25 Bolts



M8x25 (4x)

